

# CHILD CARE WORKFORCE STANDARDS BOARD

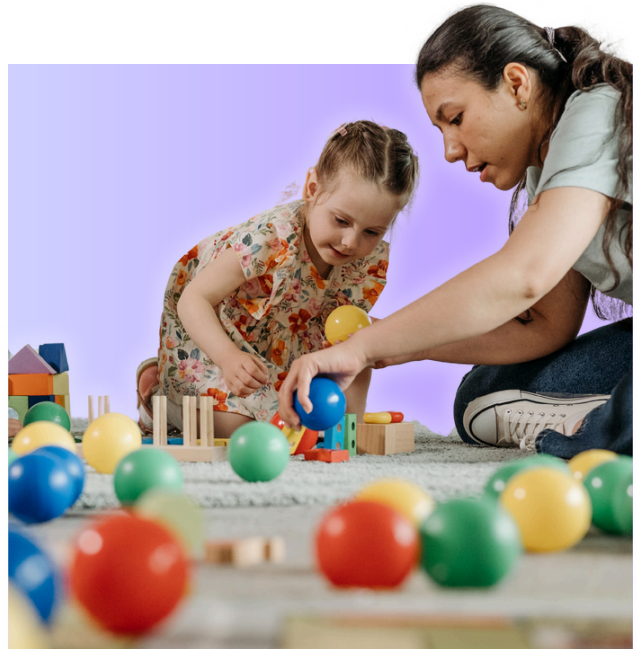
WSLC, AFL-CIO  
April Sims, President  
Cherika Carter, Secretary Treasurer

## Care workers make all other work possible.

Providers have dedicated their lives to raising generations of children. Largely Black and brown women, child care providers earn low wages, are not respected as professionals, yet still risked their health during the pandemic to continue providing care to Washington's kids.

## THE PROBLEM

**Washington has a child care crisis.** Families can't afford it, and care providers can't afford to live on the industry's low salaries. A family of three making \$62,000 a year still faces child care costs that consume 20-30% of the family budget. Meanwhile, a child care teacher in Washington makes an average of \$35,000 a year, and too many of these caring, empathetic professionals are forced to leave for better paying jobs.



## THE SOLUTION

**Child care workers are living this crisis and they know what's needed to address it.** The State Legislature should establish the Child Care Workforce Standards Board to make childcare and care work more sustainable, empowering providers, employers, and working families to set job standards in Washington.



- **With over 6,000 licensed facilities, child care in Washington is a diffuse workforce;** organizing and collective bargaining one facility at a time makes it difficult to raise standards across the industry.
- **Worker standards boards are a tool that many states, including Minnesota, Colorado, California, and New Jersey use to both improve working conditions and standards and empower workers.**
- **The Child Care Workforce Standards Board would include childcare providers, employers, and community members who rely on child care, and work with LNI and DCYF to set standards for child care providers in our state.** This approach allows collaborative discussion on issues like wages and benefits, safety, and professional development, as well as space to craft holistic solutions that support child care providers, workers, and the communities they serve. This is a last-mile tool that ensures public funding for child care programs. makes it into workers' pockets.



Learn more at [wslc.org](http://wslc.org)

Questions? Contact WSLC Legislative Director John Traynor at [jtraynor@wslc.org](mailto:jtraynor@wslc.org)



*Our Voice - Our Power - Our Movement*

14-JAN-25